

Plate Heat Exchanger Indirect Fired Water Heater

**Uses low temperature boiler water
to heat domestic water**

Replaceable brazed plate or plate
and frame heat exchanger.

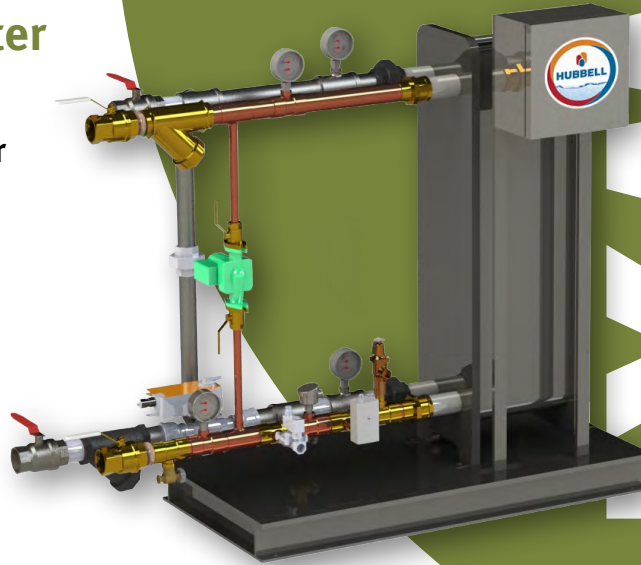
Factory selected and sized boiler water
control valve simplifies installation
and ensures reliable operation.

**Only non-ferrous components on
domestic water side.**

- Equipped with all operating controls and ready for immediate installation
- Heavy duty construction withstands demanding commercial/industrial use
- Compact design requires minimal floor space
- Designed to fit through standard door opening

Applications

Schools, office buildings, sports venues, hotels, industrial facilities, nursing homes, hospitals, heat recovery systems.



BWXP

SYNERGY HYDRO SERIES

A Heavy Duty Indirect Fired Water Heater

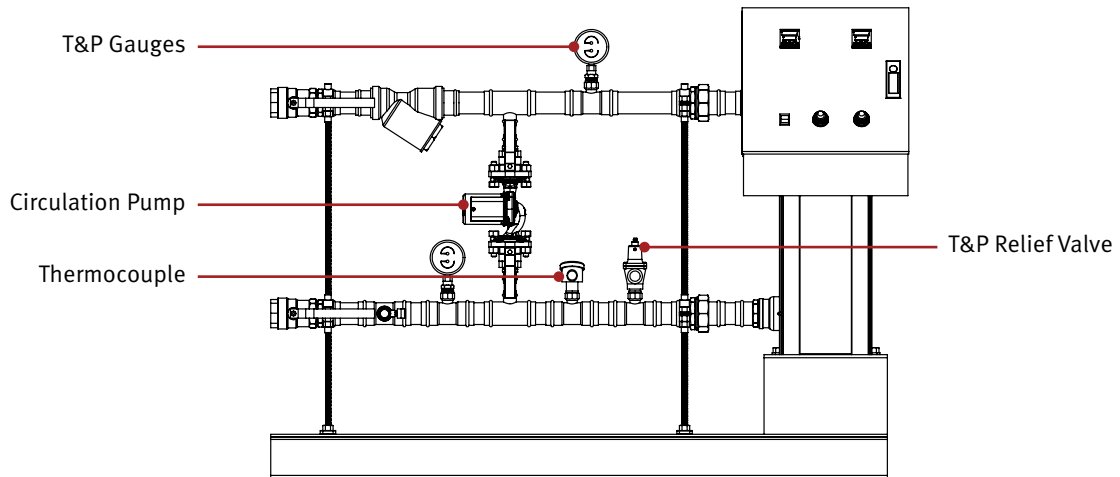
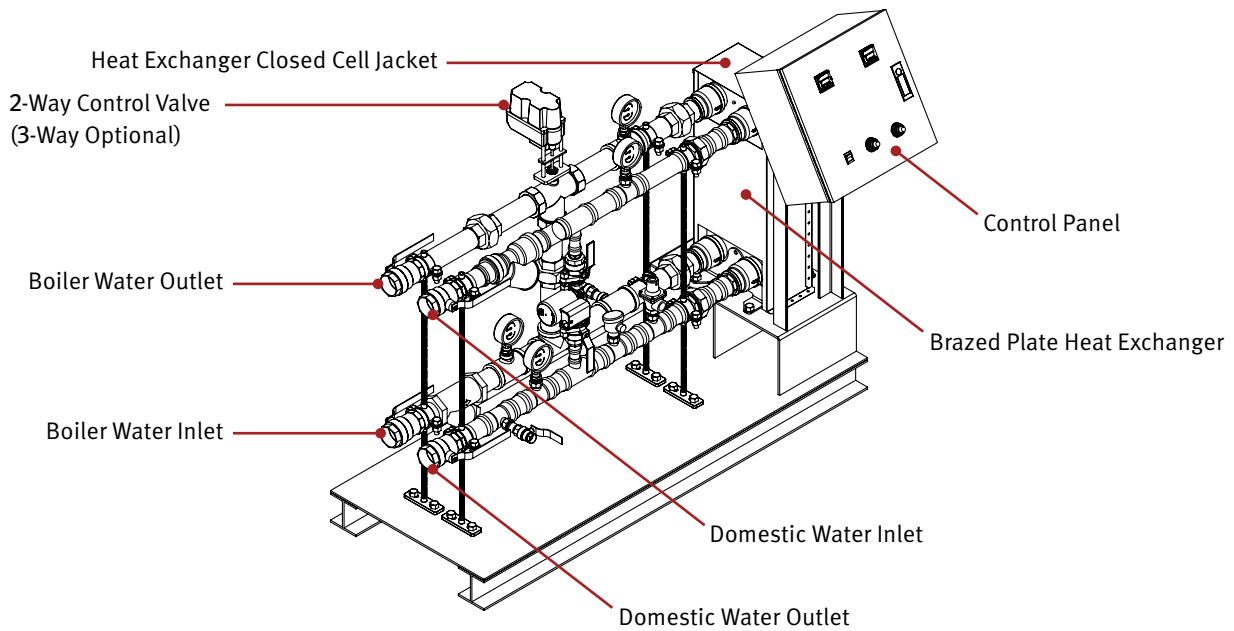
The Hubbell Synergy Hydro BWXP is a fully packaged indirect fired water heater utilizing boiler water from a condensing boiler as the energy source for heating potable water. By utilizing plate type heat exchangers, the system can provide efficient heat transfer at temperatures below traditional U-tube bundles. Each component is carefully selected to ensure high performance in even the most demanding applications. The Synergy Hydro BWXP is a reliable potable water heating solution for commercial and industrial applications.

Over 100 years of water heating expertise

Hubbell water heaters are the right choice for your commercial and industrial applications. We have water heating solutions for most energy sources with storage capacities from 1–10,000 gallons — all designed, engineered, and manufactured for reliability and longevity coupled with unparalleled support and service.

NOTE: Manufactured in an ISO 9001:2015 facility.
BABA & BAA compliance is available upon request.

Specifications



Note: Specific dimensions provided upon formal submittal.

Domestic Water Pressure Drop	8PSIG at maximum flow rate
Electrical Requirements	120/1/60 Hz 5 Amp
Maximum Boiler Water Temperature and Pressure	220°F/150 PSIG
Maximum Domestic Water Temperature and Pressure	180°F/150 PSIG
Temperature Control Range	34–180°F

Standard Equipment

Heat Exchanger

Plate heat exchangers are extremely efficient, allowing for close or cross temperature approaches between the boiler water and heated water. Hubbell offers single wall or double wall brazed plate or plate and frame type heat exchangers.

Control Valve

Hubbell water heaters are factory furnished with a boiler water control system to regulate the flow of boiler water through the heat exchanger.

- Modulating 3-Way Diverting Valve
- Modulating 2-Way

High Limit Safety System

Fail safe control valve for over temperature protection. Valve opens and sends over temp water to drain until over temp condition is remedied.

Temperature and Pressure Gauges

Provided on boiler and domestic water inlet and outlet connections.

Pressure and Temperature Relief Valve

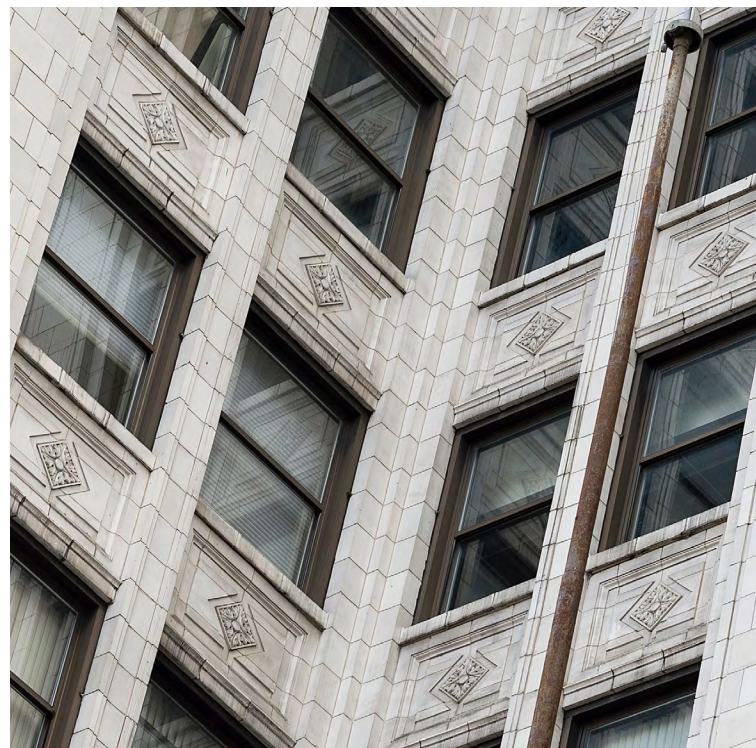
All Hubbell packaged systems are provided with a T&P Relief Valve sized for the maximum output of the heat exchanger.

Intra-System Domestic Water Circulator

Domestic water fractional horsepower pump circulates water through the heat exchanger reducing the potential for scale build-up and maximizing the heat transfer efficiency of the system.

Structural Steel Base

Designed to fit through a doorway. The structural steel base affords easy rigging and protects components from damage



Synergy Hydro BWXP Model Number Designation

MODEL	HEAT EXCHANGER MATERIAL	RECOVERY RATING	PLATE EXCHANGER	OPTIONAL EQUIPMENT
BWXP	SS = Stainless steel (316L)	In GPH at 100°FΔT	BPS = Single wall, brazed BPD = Double wall, brazed PFS = Single wall, plate & frame PFD = Double wall, plate & frame	Write/type optional equipment code in the gray box below in alphabetical order. For multiple options separate codes with a dash (-).

BWXP — SS — — —

Example: BWXP-SS-3600-BPD-E3

Hubbell Synergy Hydro BWXP Plate Heat Exchanger indirect fired water heater with a 2-way control valve and a double wall brazed plate heat exchanger capable of recovering 3600 GPH from 40°F to 140°F using 100 GPM boiler water 150°F-90°F with optional audible alarm.

Optional Features *Optional equipment must be called out in the written specifications, use the codes below.*

Controls

- C41** Communications for Integrated Control Systems (Specify MS/IP or MS/TP)
- C42** Single Solenoid Safety System (Closes B.W. Inlet in Event of Hi-Limit Trip)
- C43** Remote Start/Stop
- C44** HVAC Pump Enable
- C45** 3-Way Boiler Control Valve
- C46** Heater Exchanger Fouling Indication (Pump DPSH)
- C47** Touchscreen Display
- C48** Audio Fault Alert

***Please note:** Optional equipment may impact overall dimensions and weight. Please request submittal drawing from factory.

Electrical

- E2** Indicating Lamps (Specify Color and What it is Indicating)
- E3** Audible alarm (Specify Fault)

General

- G11** High Pressure, Domestic (250 PSIG, Includes Tank)
- G12** High Pressure, Boiler Side (250 PSIG)
- G14** Integration of User Specified Pump or Other Components
- G16** NEMA 4X Rating
- G17** NEMA 4 Rating

Heat Exchanger

- H1** Plate & Frame Single Wall Design
- H2** Brazed Plate, Single Wall Design
- H3** Plate & Frame Double Wall Design
- V40** Flanged Inlet and Outlet Connections (ANSI Class 150, Please Specify Size)