

## Compact Point-Of-Use Electric Water Heater

**1 gallon, 450w or 1kW,  
120 Volt, 1 Phase**

**Stainless Steel tank and a low watt  
density heating element provide long  
service life**

**Reliable, trouble-free design**

**Space saving design requires no floor  
space and is acceptable for use in ADA  
compliant installations**

- Low amperage design reduces peak power consumption and installation costs
- 304 Stainless Steel Exterior
- Point-of-use installation installs directly to cold water piping
- Thermostat provides accurate temperature control
- No flow restrictor or special aerator required
- Easily installed using 120V 1 phase power

### Applications

Food prep facilities, remote locations, restaurants, bars, food carts/trucks, lavatory sinks, and much more.



### Reliability, durability, longevity...the CE110

The Hubbell Endurance CE110 is a compact point-of-use water heater that does not take up any floor space and eliminates the need for long pipe runs from a central heater. It is simple to install, operates with all types of fixtures, does not require a flow restricting device and will not alter the performance or appearance of a fixture. The Endurance CE110 is ideal for many commercial and industrial applications where point-of-use hot water is required. Its rugged construction ensures reliable and trouble free operation.

### Over 100 years of water heating expertise

Hubbell water heaters are the right choice for your commercial and industrial applications. We have water heating solutions for most energy sources with storage capacities from 1–10,000 gallons — all designed, engineered, and manufactured for reliability and longevity coupled with unparalleled support and service.

**NOTE:** Manufactured in an ISO 9001:2015 facility.  
BABA & BAA compliance is available upon request.



## Heater Specifications

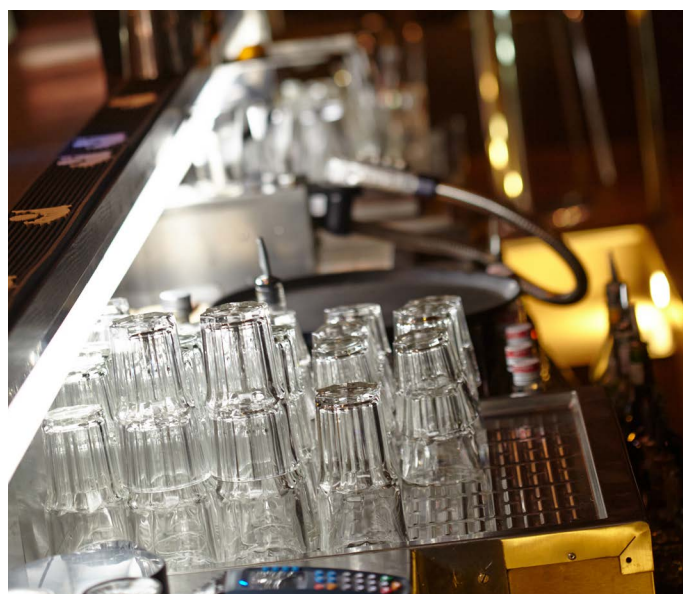
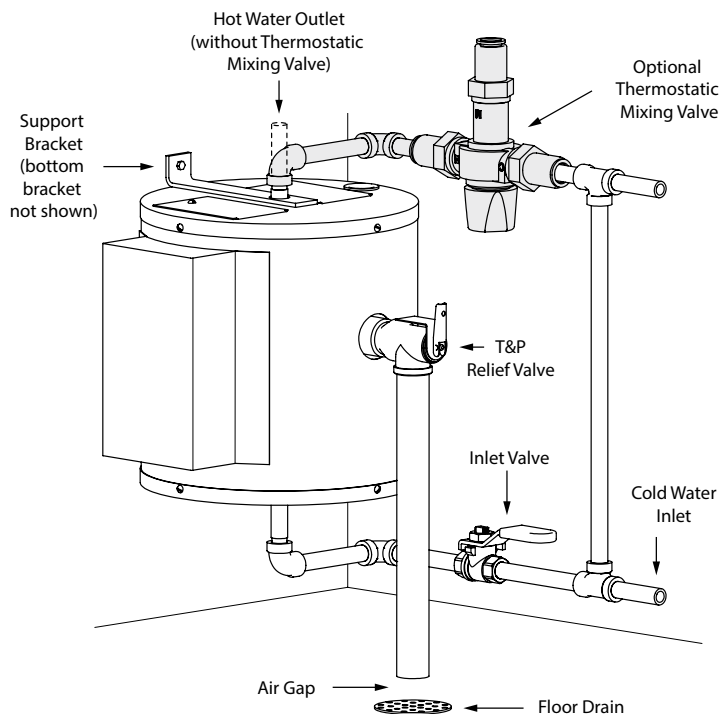
	Watts	Amps	Volt	Phase	Recovery Rate No Thermostatic Mixing Valve	Recovery Rate With Thermostatic Mixing Valve
<b>CE110</b>	1000	8.3	120	1	6 GPH	11 GPH
<b>CE110-450W</b>	450	3.8	120	1	3 GPH	6 GPH

<b>Tank</b>	Stainless Steel
<b>Capacities</b>	1 gallon
<b>Orientation</b>	Vertical
<b>Voltage</b>	120 Volt
<b>Phases</b>	1 Phase
<b>Connection Size:</b>	
Inlet	1/4" Male NPT
Outlet	1/4" Male NPT
Relief Valve	3/4" Female NPT
<b>Thermostat Range</b>	110–170°F, graduated 1–10
<b>Hi-Limit</b>	190°F (fixed)
<b>Design WP</b>	150 psi
<b>Design Test Pressure</b>	225 psi
<b>Element</b>	Copper Sheathed
<b>Insulation</b>	1" Fiberglass
<b>Warranty</b>	
Parts/Labor	1 year
Tank	5 year Non Pro-Rated
<b>Jacket</b>	304 Stainless Steel
<b>Shipping Weight</b>	15 lbs

**Note:** Alternate voltages available, consult factory

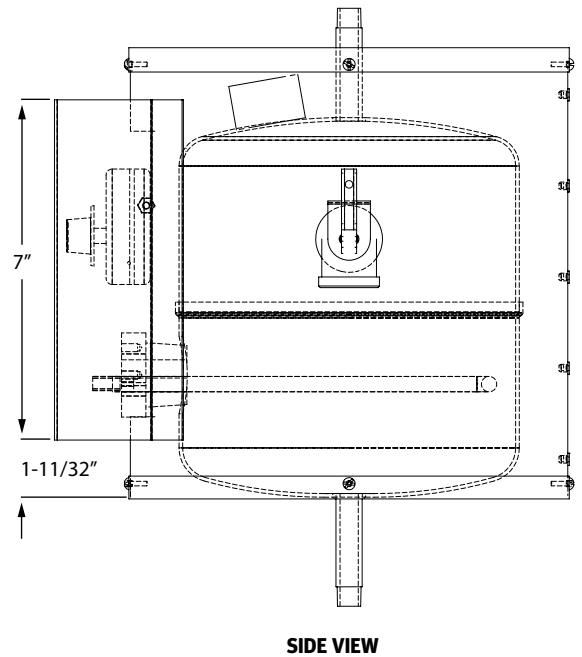
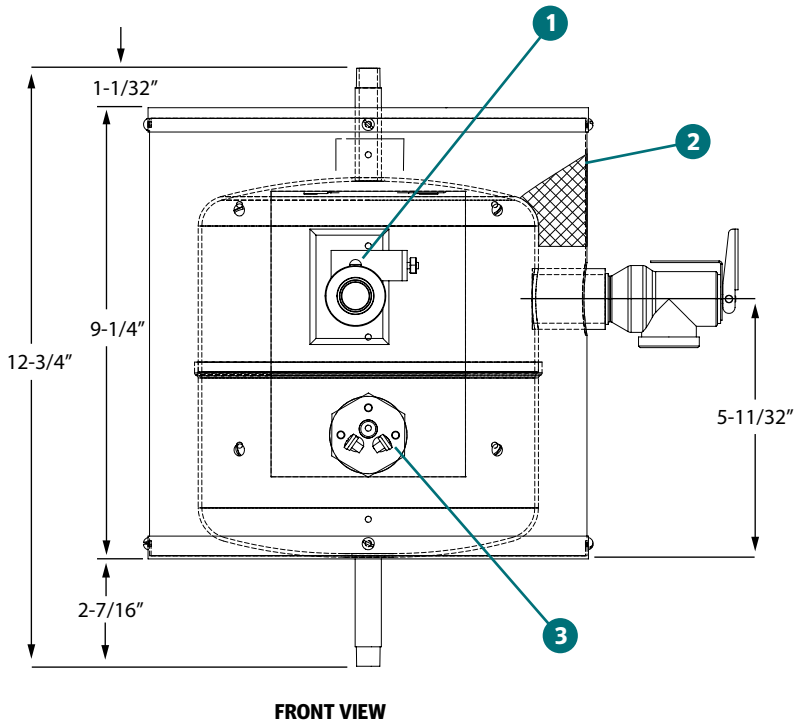
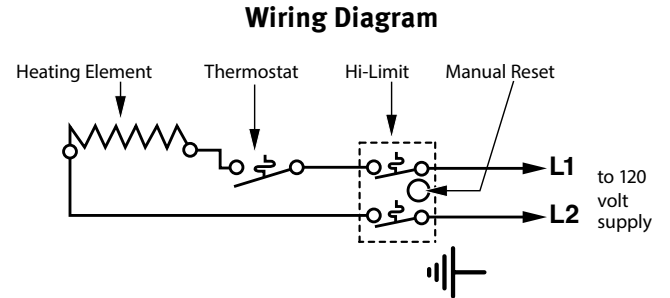
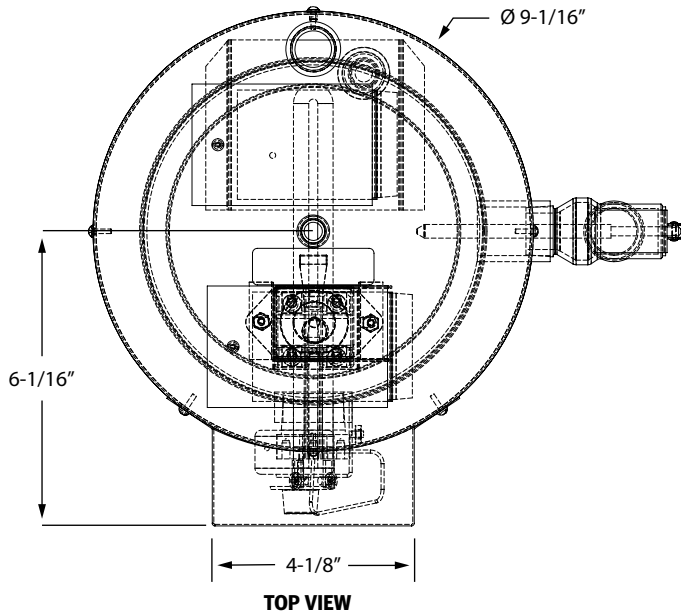
## Standard Features

- Unit supplied with two (2) wall mounting brackets
- Unit supplied with T&P relief valve set at 150 psi and 210°F



All information is subject to change without notice. Consult factory for submittal drawings.

## Dimensions



PC Number	Description
1	Thermostat 110–170°F
2	Insulation Fiberglass 1" Thick
3	Heating Element — 1000 Watts, 120V

All information is subject to change without notice. Consult factory for submittal drawings.

## Available Accessories

**10-year Warranty:** 10-year non pro-rated tank warranty, specify part number "VESSEL WARRANTY"

**Mixing valve – 1/2", 80-120F°** part number "LFMMVM1-UT ASSE1070"

## Optional Equipment

**Note:** *Optional equipment must be called out in the written specifications, using the codes below.*

### Electrical

**E10** Factory supplied 6 foot long grounded power cord

**Please note:** Optional equipment may impact overall dimensions and weight. Please request submittal drawing from factory.

