

Hubbell water heaters are the right choice for your commercial and industrial applications. We have water heating solutions for most energy sources with storage capacities from 1–10,000 gallons — all designed, engineered, and manufactured for reliability and longevity coupled with unparalleled support and service.

## ELECTRIC HEATERS

### RESIDENTIAL | Endurance Series

#### Light Duty Commercial

6–55 gallon capacity, up to 12 kW, single phase and three phase options available



**E**

### COMMERCIAL | Endurance Series

#### Commercial Electric

19–119 gallon capacity, up to 58 kW in all three phase voltages, over 12 kW in all single phase voltages

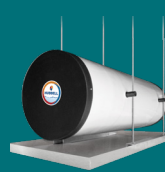


**SE**

### HORIZONTAL | Endurance Series

#### Ceiling Hung Horizontal

19, 30, 40, 55 gallon capacity, all voltages, single or three phase made specifically to be ceiling hung



**EH/SEH**

### POINT-OF-USE | Endurance Series

#### Compact Point-Of-Use

Point-of-use, 1 gallon capacity, 1000 or 450 watts, single phase



**CE 110**

### POINT-OF-USE | Endurance Series

#### Point-of-use

Compact, 2.5 gallon water heater designed to provide instant hot water in remote locations where space is limited



**CE25**

### HIGH CAPACITY | Signature Series

#### Packaged Instantaneous Circulation Heater

Full kW selection in all voltages, single or three phase, used for domestic water and boiler applications



**CR**

### HIGH CAPACITY | Signature Series

#### ASME Packaged Electric

15–1600 kW all voltages and phases, 80–10,000\* gallon capacity

\*Larger capacities available



**SH**

### HEAT PUMPS | Omni Series

#### Heat Pump

Fully integrated heat pump water heater 40–119 gallon capacity, electric back-up, up to 58 kW in all three phase voltages



**PBX**

### HEAT PUMPS | Omni Series

#### Complete Heat Pump Solution

Highly engineered and uniquely tailored to each application. Includes a heat pump, storage tank and alternate heat source with a system level controller



**HHP**

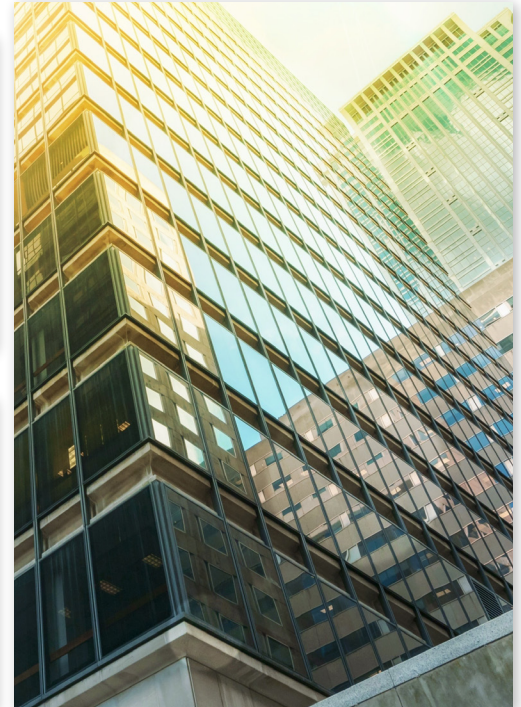
### TANKLESS | Infinity Series

#### Compact High Efficiency

98%+ efficient, easy to install and operate. Available up to 54 kW in single or three phase voltages. (Higher kW available – see TXA)



**HX/TX**





## TANKLESS | Infinity Series

### High Capacity, ASME

Can provide flow rates up to 40 GPM with a temperature range of 32–194°F. Available up to 162 kW in three phase voltage



TXA

## TANKLESS | Infinity Series

### Tankless Point-Of-Use

Whole house/point-of-use, available 3 through 27 kW single phase voltage



R



## DI/RO | Ultrapure Series

### Deionized (RO/DI)

For heating ultrapure and mildly corrosive water. Point-of-use heater up to 88 kW in single or three phase voltages



HD

## DI/RO | Ultrapure Series

### Deionized (DI)

Provides a large supply of hot DI water for immediate use. 1–119 gallon capacity, up to 58 kW, single or three phase voltage



D

## TEPID WATER | Suretemp Series

### Tepid Water Delivery System

Specifically designed to provide high volume tepid water for emergency fixtures. Configurable using electric, gas, steam or hydronics



EMV

## TEPID WATER | Suretemp Series

### Tankless Electric Tepid Water Heater

Provides tepid water for emergency fixtures available up to 162 kW in all three phase voltages



ETX/ETXA

## INDUSTRIAL PROCESS | Process Series

### ASME Process

For industrial process applications, all voltages, single or three phase up to 88 kW



V

## EXPLOSION RESISTANT | Resistance Series

### Explosion Resistant

10–5000 gallon capacity, 1.5–1600 kW, single or three phase voltage



ER



## INDIRECT HEATERS

## HYDRONIC | Synergy Hydro Series

### Indirect Fired Heavy Duty ASME

120–1000 gallon capacity water heater utilizing low-temperature boiler water to heat domestic water

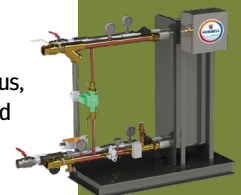


BWP

## HYDRONIC | Synergy Hydro Series

### Fully Packaged Indirect Fired

Compact design, semi-instantaneous, replaceable brazed plate or plate and frame



BWXP



## CONTROLLERS & COMPONENTS

### COMPONENTS

#### Coils Elements & Relief Valves

Electric immersion heaters and tube bundles



### CONTROLLERS

#### HubbellConnect

Provide the ability to integrate or modify heater or plant operation to suit your needs



## STORAGE

### STORAGE

#### Carbon Steel Buffer Tanks

Carbon steel construction, long warranty. ASME section VIII Division 1



### STORAGE

#### Storage Tanks

ASME and non-ASME designs, HydraStone™ cement lined, vertical or horizontal

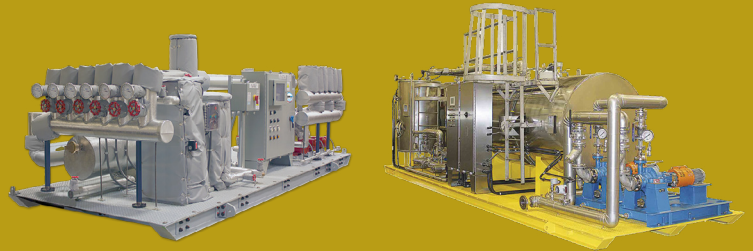


## FULL PACKAGE

### FULL PACKAGE

#### Packaged Skids

Fully integrated packaged water heating solutions, engineered and designed to operate in any environment or location





## HYDRONIC | Synergy Hydro Series

### Semi-Instantaneous Indirect Fired

Utilizes boiler water or high temperature hot water as the energy source for heating potable water



**BMX**

## HYDRONIC | Synergy Hydro Series

### ASME Packaged Indirect Fired

Utilizes boiler water or high temperature hot water to heat domestic water, semi-instantaneous or storage type, 80-10,000 gallons



**BW**

## HYDRONIC | Synergy Hydro Series

### Small Capacity Indirect Fired

Indirect fired, 35-119 gallon capacity. Utilizes boiler water



**TRANSFLOW**

## HYDRONIC | Synergy Hydro Series

### Solar Water Heater

65-119 gallon capacity. Operates by transferring heat from an existing solar collector system to your domestic potable water system



**SLN**

## STEAM | Synergy Steam Series

### Point-Of-Use Steam Fired

65-119 gallon point-of-use storage water heater that utilizes steam to heat domestic water



**PS**

## STEAM | Synergy Steam Series

### Steam-to-Water Application

Compact semi-instantaneous U-tube bundle design for hot water flows from 1-770 GPM. Available in horizontal or vertical orientation



**STX**

## STEAM | Synergy Steam Series

### Fully Packaged Steam Fired

Storage type 80-5000 gallon capacity ASME stamped



**ST**

## STEAM | Synergy Steam Series

### Steam Fired Tepid Water Heater

Reliable source of tepid water for safety shower and combination face/eyewash stations using a facility's existing steam and water supplies



**STWH**



# GAS HEATERS

## GAS HEATERS | Prime Series

### Commercial Condensing Gas

High efficiency burner 316L SS ASME heat exchanger. BTU input from 200 to 800 MBH



**NX**

## GAS HEATERS | Prime Series

### Commercial Gas Storage Water

High efficiency condensing burner 316L stainless steel and ASME stamped heat exchanger. BTU input from 200 to 400 MBH



**NXT**

## GAS HEATERS | Prime Series

### Gas Water Heater

Water tube heat exchanger combined with an optimized burner and ignition system, available from 1250 to 4000 MBTU input



**NX PLUS**

## GAS HEATERS | Prime Series

### Condensing Gas RO/DI Water

Fully modulating, up to 8:1 turndown, 96% thermal efficiency with inputs ranging from 200-800 MBH



**NXD**

## GAS HEATERS | Prime Series

### Commercial Condensing Gas Storage

High efficiency condensing burner. Removable 316L SS heat exchanger. 55,000 BTUS



**GSE**