



Commercial Condensing Gas Water Heater

Water tube heat exchanger combined with an optimized burner and ignition system, available from 1250 to 4000 MBTU input

**Up to 98% thermal efficiency
(99.9% on 4000 model)**

Four models from 1250 to 4000 MBTU input

Up to 9:1 turndown

**Four pass stainless steel heat exchanger
(ASME H and HLW), National Board & CRN**

- Easy use touch screen display
- Cascading option
- Optimized serviceability
- Small footprint
- Certifications (including pending): ANSI Z21.103/CSA4.3, SCAQMD & TCEQ; AHRI; ASME CSD-1
- 160 PSIG maximum allowable working pressure
- 210°F design temperature

A space saving water heater that's easy to install

The Prime NX Plus is a state-of-the-art condensing gas fired water heater and boiler developed to deliver high performance efficiencies, quality, and durability. At the center of this new design is the ASME certified stainless steel water tube heat exchanger combined with an optimized burner



PRIME SERIES
NX PLUS

and ignition system, available from 1250 to 4000 MBTU input. A fully integrated control system with a full color touch screen provides access to, and continuous monitoring of, critical operating parameters allowing the system to operate at up to 98% efficiency (the NX-4000 operates at 99.9% efficiency). Additionally, the NX Plus is packaged in an outdoor rated enclosure that minimizes required floor space while offering unparalleled access for scheduled services.

Over 100 years of water heating expertise

Hubbell water heaters are the right choice for your commercial and industrial applications. We have water heating solutions for most energy sources with storage capacities from 1–10,000 gallons — all designed, engineered, and manufactured for reliability and longevity coupled with unparalleled support and service.

NOTE: Manufactured in an ISO 9001:2015 facility.
BABA & BAA compliance is available upon request.



Meets the requirements of the ASME
Boiler and Pressure Vessel Code



Standard Features

GENERAL

316L stainless steel, condensing heat exchanger

Extremely low NOx emissions

Field convertible from NG to LPG

Maximum setpoint of 194°F (Boiler) and 185°F (Water Heater)

Integrated relays for main power supply

Outdoor model by default

Easy placement with lifting lugs and side access of a forklift

Easy access during commissioning and maintenance

Direct-spark ignition

Sealed combustion

Low gas pressure operation 3.5 in H₂O NG; 8 in H₂O CP

Vertical and horizontal vent termination

Category IV venting up to 150 feet for both inlet and exhaust

On/Off main power switch

High and low gas pressure switches with manual reset

Flow switch

CONTROL MODULE

Integrated cascade manager up to 16 units

Easy to use full text display

Most important connectivity options for CH systems, like 0-10V, OpenTherm and Modbus

Password security

Low water flow safety control and indication

Freeze protection

Service reminder

Time clock

Hours running

Ignition attempts

Last 10 lockout

Night setback (on CH model)

Boost functionality (on CH model)

High voltage alarm connection

18 languages integrated, including English, French and Spanish

Inlet and outlet temperature sensors



USER INTERFACE

Easy to use touch screen

All cascaded units visible in one touch screen

Cascade performance graph visible

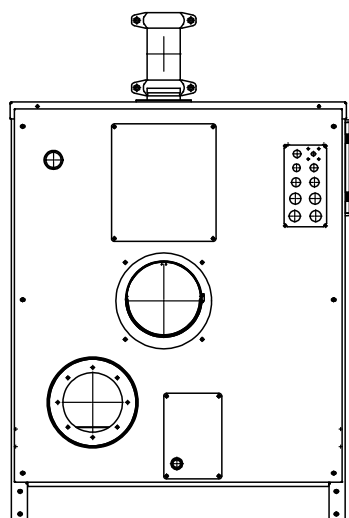
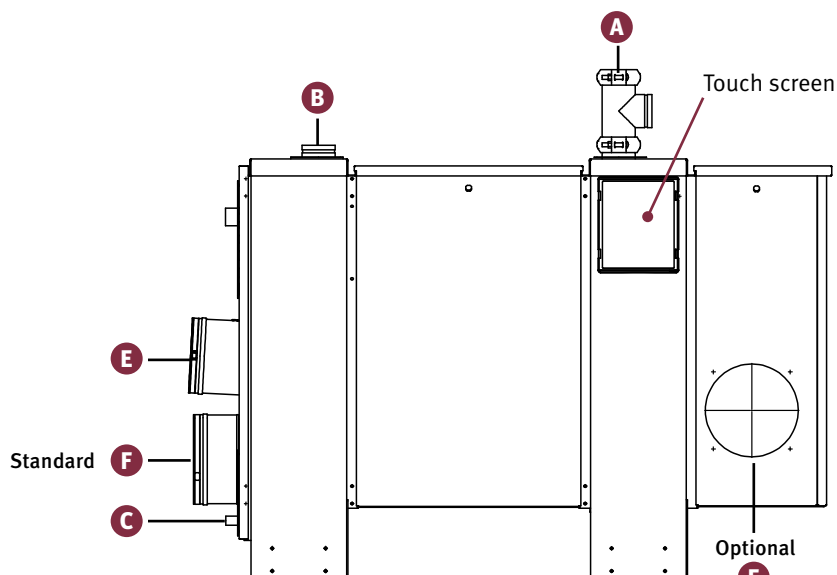
Single unit performance graph visible

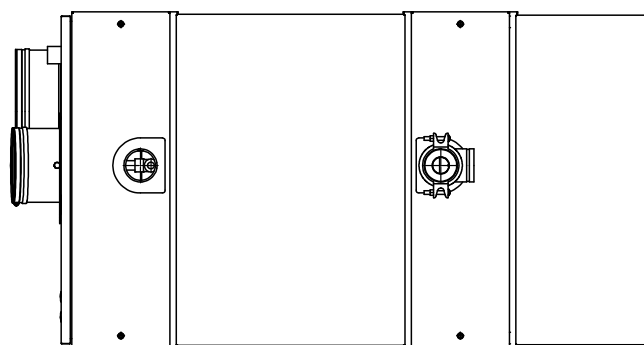
Boiler status screen shows most important values, like temperatures, status of the unit and much more

6 languages integrated, including English, French and Spanish

Outdoor reset screen for easy adjustments

Water Heater Dimensions


BACK VIEW

SIDE VIEW

OPEN FRONT VIEW

TOP VIEW

All information is subject to change without notice.
Consult factory for submittal drawings.

Prime NX Plus Dimensional Data

Model Number	Input MBH	"A" Supply	"B" Return	"C" Condensate	"D" Gas Inlet	"E" Vent	"F" Air Intake (Standard and Optional)	Size (H" x W" x D")	Weight (lbs) approx*
E-1250	1250	2-½" ANSI FLG	2-½" ANSI FLG	1-¼"	2" NPT	8"	8"	47 x 34 x 55	992
E-2000	2000	2-½" ANSI FLG	2-½" ANSI FLG	1-¼"	2" NPT	8"	8"	47 x 34 x 68	1213
E-3000	3000	4" ANSI FLG	4" ANSI FLG	1-¼"	2" NPT	10"	12"	59 x 46 x 79	1984
E-4000	4000	4" ANSI FLG	4" ANSI FLG	1-¼"	2" NPT	12"	12"	59 x 46 x 95	2314

* Weight empty, without packaging and accessories.

Available Voltages and Phases

Prime NX Plus Number Designation

MODEL	MODEL NUMBER	TYPE	OPTIONAL EQUIPMENT
E	1250 2000 3000 4000	B = boiler WH = Water heater	Write/type optional equipment code in the gray box below in alphabetical order. For multiple options separate codes with a dash (–)

MODEL	VOLTAGE / PHASE
E-1250	120/1
E-2000	208/3
E-3000	
E-4000	480/3

Specify voltage and phase:

E — —

Example: E-1250WH-C65-G45

A Hubbell Prime NX Plus water heater, 1250 MBTU input with optional outdoor sensor and shockmount feet.

Warrenty: 5 years on the heat exchanger, covering defects in materials or workmanship. All other components are covered for 1 year.

Optional Equipment

Optional equipment must be called out in the written specifications, use the codes below.

Controller

- C65** Outdoor Sensor
- C66** External Flow Temperature Sensor

General

- G43** Vibration Dampers
- G44** Leveling Casters
- G45** Shockmount Feet
- G46** Leveling Feet with Fixing Eye
- G47** Relay DHW or System Pump
- G48** Flange Adapter

Please note:

Optional equipment may impact overall dimensions and weight. Please request submittal drawing from factory.

Available Accessories *(Fill out form below to order accessories.)*

Condensate Neutralization Kit: (Contact factory to order)

Software & Interface Cable: Specify Part # S022.500.015

Accessories Name _____

Part # _____

Accessories Name _____

Part # _____

All information is subject to change without notice. Consult factory for submittal drawings.

H1078-G-20260127