



## Condensing Gas Storage Water Heater

High efficiency burner, 316L SS ASME\* heat exchanger, BTU input from 200 to 400 MBH

Up to 8:1 turndown

Numerous venting options

Natural gas or propane

BMS integration via open communication protocol

Minimal space required

Feature rich interface using touch panel controller

Scale reducing design

Low NOx emissions

- Fuel type: natural gas or propane
- Low pressure drop
- Innovative floor to tank mount configuration provides exceptional access to all components
- Increased serviceability

### Applications

Office buildings, schools, hospitals, industrial facilities, hotels, and much more.

\*Some sizes are available in non-ASME

**NOTE:** Manufactured in an ISO 9001:2015 facility. BABA & BAA compliance is available upon request.



Meets the requirements of the ASME Boiler and Pressure Vessel Code



**NXT**  
PRIME SERIES

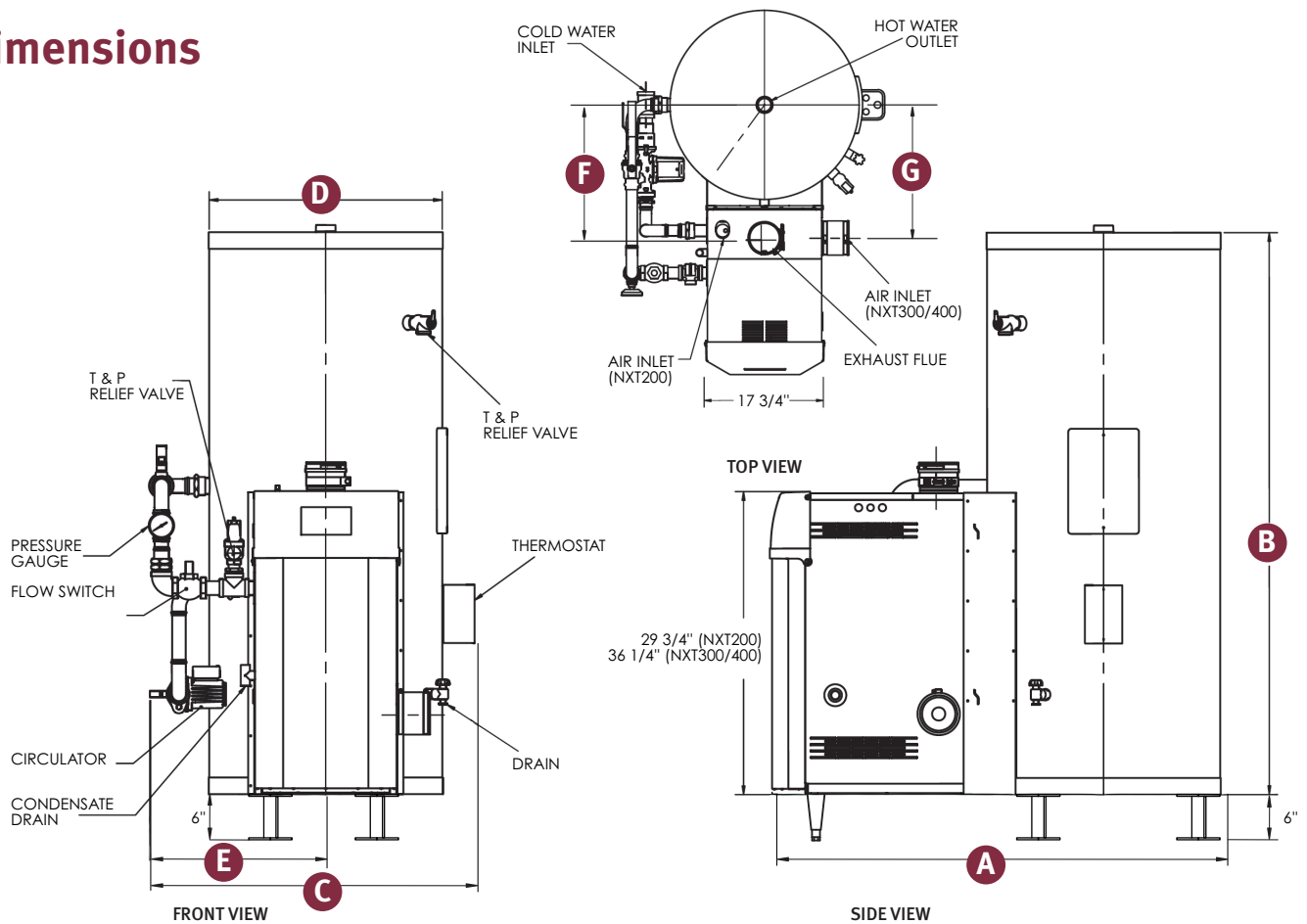
### Thermal efficiency rating of 96%

The Hubbell Prime NXT is a heavy-duty, fully condensing commercial gas water heater integrated with a storage tank, factory packaged and assembled ready for installation. The Hubbell design achieves a thermal efficiency rating of 96% and is available with inputs ranging from 200 – 400 MBH. The NXT combines the best of both worlds by combining a high efficiency, high recovery gas water heater with a properly sized long lasting cement lined storage tank, reducing energy consumption, short-cycling, and stand-by heat loss.

### Over 100 years of water heating expertise

Hubbell water heaters are the right choice for your commercial and industrial applications. We have water heating solutions for most energy sources with storage capacities from 1–10,000 gallons — all designed, engineered, and manufactured for reliability and longevity coupled with unparalleled support and service.

## Dimensions



| Model          | Input Max | Tank Capacity (Gallons) | Dimensions (Inches) |        |    |    |    |        |        | Dry Shipping Weight (Lbs.) |
|----------------|-----------|-------------------------|---------------------|--------|----|----|----|--------|--------|----------------------------|
|                |           |                         | A                   | B      | C  | D  | E  | F      | G      |                            |
| NXT200-A-80SL  | 199       | 80                      | 50                  | 61     | 46 | 28 | 31 | 21-1/4 | N/A    | 606                        |
| NXT200-C-80SL  | 199       | 80                      | 46-1/2              | 70     | 37 | 28 | 24 | 21-1/4 | N/A    | 606                        |
| NXT200-A-120SL | 199       | 120                     | 48                  | 73     | 48 | 30 | 32 | 25-1/4 | N/A    | 728                        |
| NXT200-C-120SL | 199       | 119                     | 47                  | 67-1/2 | 44 | 30 | 30 | 23-1/4 | N/A    | 728                        |
| NXT300-A-80SL  | 275       | 80                      | 50                  | 61     | 46 | 28 | 31 | 21-1/4 | 19-5/8 | 654                        |
| NXT300-A-120SL | 275       | 120                     | 54                  | 73-1/2 | 51 | 30 | 26 | 19-7/8 | 19-5/8 | 776                        |
| NXT300-A-150SL | 275       | 150                     | 52-1/2              | 78     | 50 | 32 | 34 | 21     | 20-3/4 | 871                        |
| NXT400-A-80SL  | 399       | 80                      | 50                  | 61     | 46 | 28 | 31 | 21-1/4 | 19-5/8 | 696                        |
| NXT400-A-120SL | 399       | 120                     | 54                  | 73-1/2 | 51 | 30 | 26 | 19-7/8 | 19-5/8 | 818                        |
| NXT400-A-150SL | 399       | 150                     | 52-1/2              | 78     | 50 | 32 | 34 | 21     | 20-3/4 | 913                        |

**Note:** Model numbers with "A" are ASME models, commercial models "C" are not ASME

## Optional Equipment

### Controller

C36 BACnet Gateway Module

C37 Lontalk Gateway Module

All information is subject to change without notice. Consult factory for submittal drawings.