

## ASME Process Water Heater

**For industrial applications,  
all voltages, single or three  
phase up to 88 kW**

**Stainless steel ASME Section VIII stamped  
pressure vessel provides maximum longevity  
and quality**

**Heavy duty construction withstands  
demanding industrial use**

**Packaged with all electrical operating  
controls for efficient installation**

- Easy to service – when replacing a part no other part needs to be removed
- Small reserve capacity lowers peak power demand and reduces operating costs in systems with ON/OFF cyclical demand
- Most units are easily upgradable for future expansion
- A full range of styles, sizes and optional features are readily available to meet your exact heating needs

### Applications

Washing/cleaning systems, OEM packages, heat transfer systems, freeze protection, sanitizing systems, process heating, water treatment systems.



PROCESS SERIES

### A reliable industrial process water heater

The Hubbell Process V is a dependable and trouble-free water heater in continuous, cyclical or variable flow systems. The Process V has a stainless steel ASME stamped pressure vessel that resists the corrosive effects of hot water and provides maximum longevity. We use high quality materials and components to ensure reliable operation in even the most demanding application. The Process V is ready for immediate installation and service and all electrical operating controls are factory selected, sized and wired.

### Over 100 years of water heating expertise

Hubbell water heaters are the right choice for your commercial and industrial applications. We have water heating solutions for most energy sources with storage capacities from 1–10,000 gallons — all designed, engineered, and manufactured for reliability and longevity coupled with unparalleled support and service.

**NOTE:** Manufactured in an ISO 9001:2015 facility.  
BABA & BAA compliance is available upon request.



Meets the requirements of the ASME  
Boiler and Pressure Vessel Code



# Why Install A Hubbell Industrial Grade Water Heater?

## Reliability

The Hubbell Process V heater is designed to provide many years of operation. The tank is all stainless steel construction and is engineered, constructed and stamped in strict conformance to ASME Section VIII.

## Lower Operating Costs

The pressure vessel used in the Hubbell Process V is encapsulated in environmentally friendly CFC/HCFC free closed cell foam insulation to minimize stand-by heat loss. This high quality insulation reduces heat loss by more than half when compared to fiberglass type insulation.

## Advanced Construction

- Trouble-free system integration, operation, and maintenance
- Digital temperature control
- Adjustable from 32–194°F (0°–90°C) with adjustable temperature differential
- Includes a float type low water cut off to prevent the heating elements from dry firing
- Internal leak detection sensor notification if water is present in the control cabinet
- For ease of service and maintenance, when a component is removed for service no other component needs to be removed
- All sensing functions are integrated into one probe which can be replaced without draining the tank
- All sensing functions are integrated into one probe
- Heating element and sensing probe are straight thread screw types that utilize a Viton O-ring to minimize leakage problems



All sensing functions are integrated into one probe which can be replaced without draining the tank

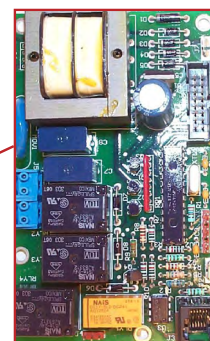
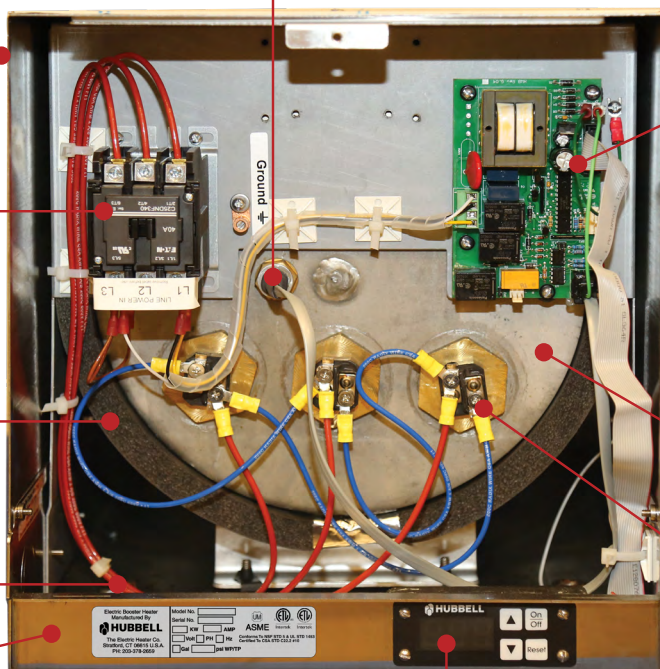
Brushed stainless steel exterior increases life and resists corrosion

Magnetic contactor  
Resettable circuit breakers  
(on units over 120 amps)  
replace one-shot fuses

Closed cell foam insulation  
lowers operating costs

Single point power connection

Leak detection system notifies the user if water is detected inside the control area



Electronic control module integrates all control functions into one component

ASME stamped 304L stainless steel tank for extended life

Screw plug elements simplify service



Digital display provides visual set point and fault conditions. Operator controls are easily accessible including ON/OFF, reset, and temperature adjustment

## Heater Specifications

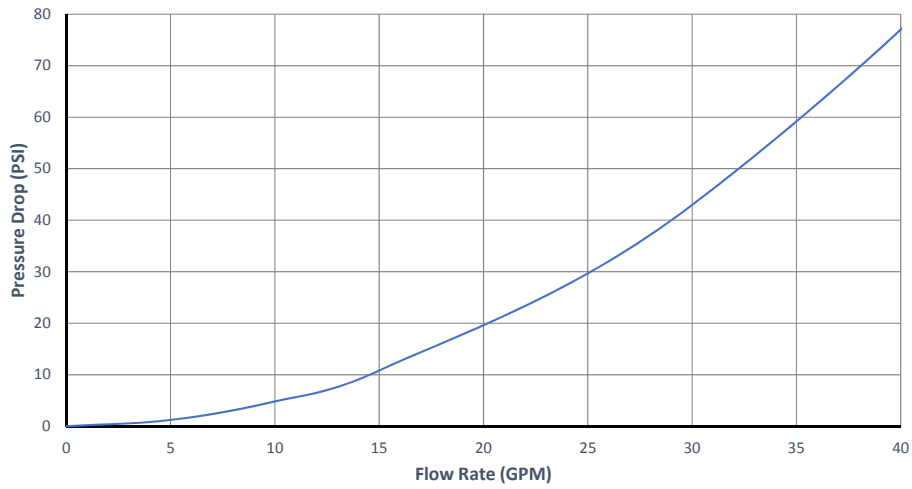
|                               |                      |
|-------------------------------|----------------------|
| <b>Vessel</b>                 | 304L stainless steel |
| <b>Storage Capacity</b>       | 6 or 16 gallons      |
| <b>Voltage</b>                | 120–600 volt         |
| <b>Phase</b>                  | 1Φ or 3Φ             |
| <b>Connections (1–58kW)</b>   |                      |
| Material                      | Bronze               |
| Inlet                         | ¾" Male NPT          |
| Outlet                        | ¾" Male NPT          |
| Relief Valve                  | ¾" Female NPT        |
| <b>Connections (64–88kW)</b>  |                      |
| Material                      | Bronze               |
| Inlet                         | 1-½" Male NPT        |
| Outlet                        | 1-½" Male NPT        |
| Relief Valve                  | 1" Female NPT        |
| <b>Temperature Controller</b> |                      |
| Type                          | Solid state          |
| Style                         | Immersion            |
| Range                         | 32–194°F (0–90°C)    |
| <b>Hi-Limit</b>               |                      |
| Type                          | Solid state          |
| Style                         | Immersion            |
| Reset                         | Manual               |
| Range                         | 205°F (fixed)        |

|                           |   |
|---------------------------|---|
| <b>Heating Element</b>    |   |
| Type                      | Screw plug with Buna-N o-ring                             |
| Style                     | Tubular   |
| Sheathing                 | Copper with brass plug                                    |
| <b>Controller</b>         |   |
| Degrees                   | °F or °C (default °F)                                     |
| Differential              | 1°–20° (default 2°)                                       |
| Display                   | Shows set point or actual temperature (default set point) |
| Low Water Sensing         | On or Off (Default: On)                                   |
| Low Water Reset           | Manual or Automatic (Default: Automatic)                  |
| Staging                   | Up to 3 stages  |
| <b>Magnetic Contactor</b> |   |
| Type                      | Definite purpose  |
| Control Circuit           | 208/240 volt  |
| Internal Wiring           | Tefzel 750 200°C  |
| Digital Display           | 3-digit 7 segment LED display                             |
| <b>Fault Indicators</b>   | Low water<br>Hi-temperature<br>No probe<br>Leak detection |
| Low Water Type            | Conductivity  |
| Design WP                 | 150 psi   |
| Design TP                 | 225 psi   |
| <b>Relief Valve</b>       |   |
| Approvals                 | ASME/CSA  |
| Temperature               | 210°F   |
| Pressure                  | 150 psi   |
| Material                  | Bronze  |
| <b>Insulation</b>         | CFC/HCFC free<br>Closed cell foam                         |
| <b>Outer Jacket</b>       | 304L stainless steel                                      |
| <b>Warranty</b>           |   |
| Vessel                    | 3 years   |
| Electrical                | 1 year  |

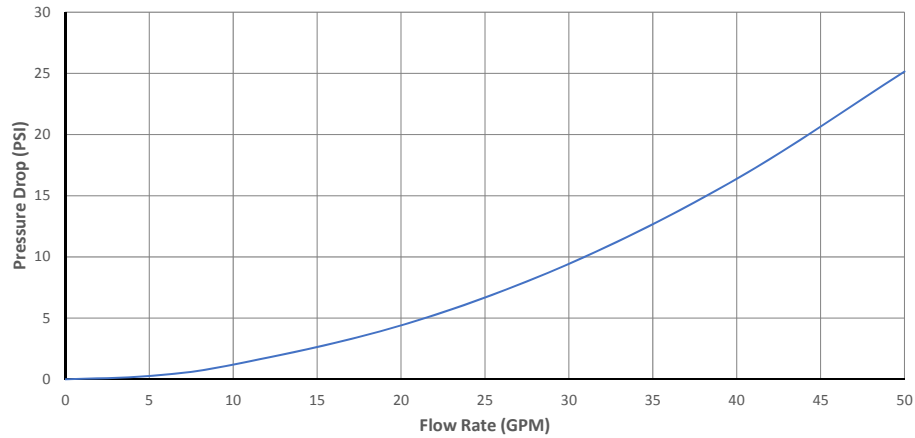
All information is subject to change without notice. Consult factory for submittal drawings.

## Pressure Drop Charts

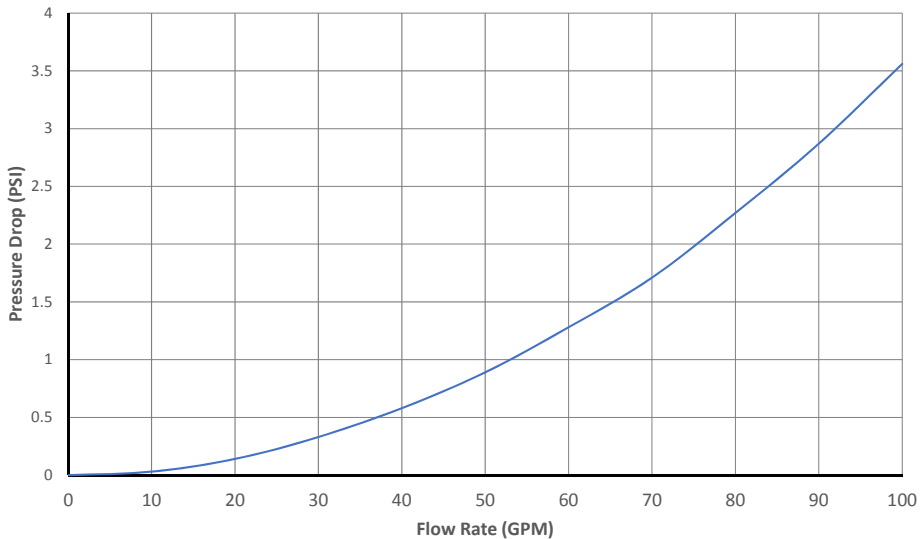
### V6 Pressure Drop



### V16 (Up to 58.5 kW) Pressure Drop



### V16 (Over 58.5 kW) Pressure Drop



All information is subject to change without notice. Consult factory for submittal drawings.

## Voltage De-Rating Factors

| Rated Voltage | Applied Voltage | De-Rating Factor |
|---------------|-----------------|------------------|
| 600           | 575             | 92%              |
| 600           | 550             | 84%              |
| 480           | 460             | 92%              |
| 480           | 440             | 84%              |
| 240           | 230             | 92%              |
| 240           | 220             | 84%              |

When the actual supply voltage (applied voltage) is different than the design voltage (rated voltage) the resulting kW output will be affected. Please see the chart for typical voltage de-rating factors or use the following formula.

$$\frac{\text{Applied Voltage}^2}{\text{Rated Voltage}^2} \times \text{Rated kW} = \text{kW output at applied voltage}$$

## Process V kW and Amperage Selection Charts

**6 Gallon** (Amperage shown in chart below indicates available models)

| kW   | 1 Phase Voltages |     |     |     | 3 Phase Voltages |     |     |     |
|------|------------------|-----|-----|-----|------------------|-----|-----|-----|
|      | 120              | 208 | 240 | 480 | 208              | 240 | 480 | 600 |
| 1    | 8                |     |     |     |                  |     |     |     |
| 1.5  | 13               |     |     |     |                  |     |     |     |
| 2    | 17               |     |     |     |                  |     |     |     |
| 3    | 25               |     |     |     |                  |     |     |     |
| 4    |                  | 19  | 17  | 8   |                  |     |     |     |
| 5    |                  | 24  | 21  | 11  |                  |     |     |     |
| 6    |                  | 29  | 25  |     | 17               | 14  | 7   | 6   |
| 7    |                  | 34  | 29  |     | 19               | 17  | 8   | 7   |
| 9    |                  | 43  | 38  |     | 25               | 22  | 11  | 9   |
| 10.5 |                  | 50  | 44  |     | 29               | 25  | 13  | 10  |
| 12   |                  | 58  | 50  |     | 33               | 29  | 14  | 12  |
| 13.5 |                  | 65  | 56  |     | 38               | 33  | 16  | 13  |
| 15   |                  | 72  | 63  |     | 42               | 36  | 18  | 14  |
| 18   |                  | 87  | 75  |     | 50               | 43  | 22  | 17  |
| 24   |                  | 115 | 100 |     | 67               | 58  | 29  | 23  |
| 27   |                  | 130 | 113 |     | 75               | 65  | 33  | 26  |
| 30   |                  | 144 | 125 |     | 83               | 72  | 36  | 29  |
| 36   |                  | 173 | 150 |     | 100              | 87  | 43  | 35  |
| 39   |                  | 188 | 163 |     | 108              | 94  | 47  | 38  |
| 40.5 |                  | 195 | 169 |     | 113              | 98  | 49  | 39  |
| 45   |                  |     | 188 |     | 125              | 108 | 54  | 43  |
| 54   |                  |     |     |     | 150              | 130 | 65  | 52  |
| 58.5 |                  |     |     |     | 163              | 141 | 70  | 56  |

All information is subject to change without notice. Consult factory for submittal drawings.

## Process V kW and Amperage Selection Charts

### 16 Gallon with ¾" Inlet and Outlet

(Amperage shown in chart below indicates available models)

| kW   | 1 Phase Voltages |     |     |     | 3 Phase Voltages |     |     |     |
|------|------------------|-----|-----|-----|------------------|-----|-----|-----|
|      | 120              | 208 | 240 | 480 | 208              | 240 | 480 | 600 |
| 1    | 8                |     |     |     |                  |     |     |     |
| 1.5  | 13               |     |     |     |                  |     |     |     |
| 2    | 17               |     |     |     |                  |     |     |     |
| 3    | 25               |     |     |     |                  |     |     |     |
| 4    |                  | 19  | 17  | 9   |                  |     |     |     |
| 5    |                  | 24  | 21  | 11  |                  |     |     |     |
| 6    |                  | 29  | 25  |     | 17               | 14  | 7   | 6   |
| 7    |                  | 34  | 29  |     | 19               | 17  | 8   | 7   |
| 9    |                  | 43  | 38  |     | 25               | 22  | 11  | 9   |
| 10.5 |                  | 50  | 44  |     | 29               | 25  | 13  | 10  |
| 12   |                  | 58  | 50  |     | 33               | 29  | 14  | 12  |
| 13.5 |                  | 65  | 56  |     | 38               | 33  | 16  | 13  |
| 15   |                  | 72  | 63  |     | 42               | 36  | 18  | 14  |
| 18   |                  | 87  | 75  |     | 50               | 43  | 22  | 17  |
| 24   |                  | 115 | 100 |     | 67               | 58  | 29  | 23  |
| 27   |                  | 130 | 113 |     | 75               | 65  | 33  | 26  |
| 30   |                  | 144 | 125 |     | 83               | 72  | 36  | 29  |
| 36   |                  | 173 | 150 |     | 100              | 87  | 43  | 35  |
| 39   |                  | 188 | 163 |     | 108              | 94  | 47  | 38  |
| 40   |                  | 192 | 167 |     | 111              | 96  | 48  | 39  |
| 45   |                  |     | 188 |     | 125              | 108 | 54  | 43  |
| 54   |                  |     |     |     | 150              | 130 | 65  | 52  |
| 58.5 |                  |     |     |     | 163              | 141 | 70  | 56  |

### 16 Gallon with 1-½" Inlet and Outlet

(Amperage shown in chart below indicates available models)

| kW | 3 Phase Voltages |     |     |     |
|----|------------------|-----|-----|-----|
|    | 208              | 240 | 480 | 600 |
| 64 | 178              |     |     |     |
| 68 |                  | 164 | 82  | 66  |
| 81 | 225              | 195 | 98  |     |
| 86 | 239              |     |     | 83  |
| 88 |                  | 212 | 106 |     |

All information is subject to change without notice. Consult factory for submittal drawings.

## Recovery ratings in GPM

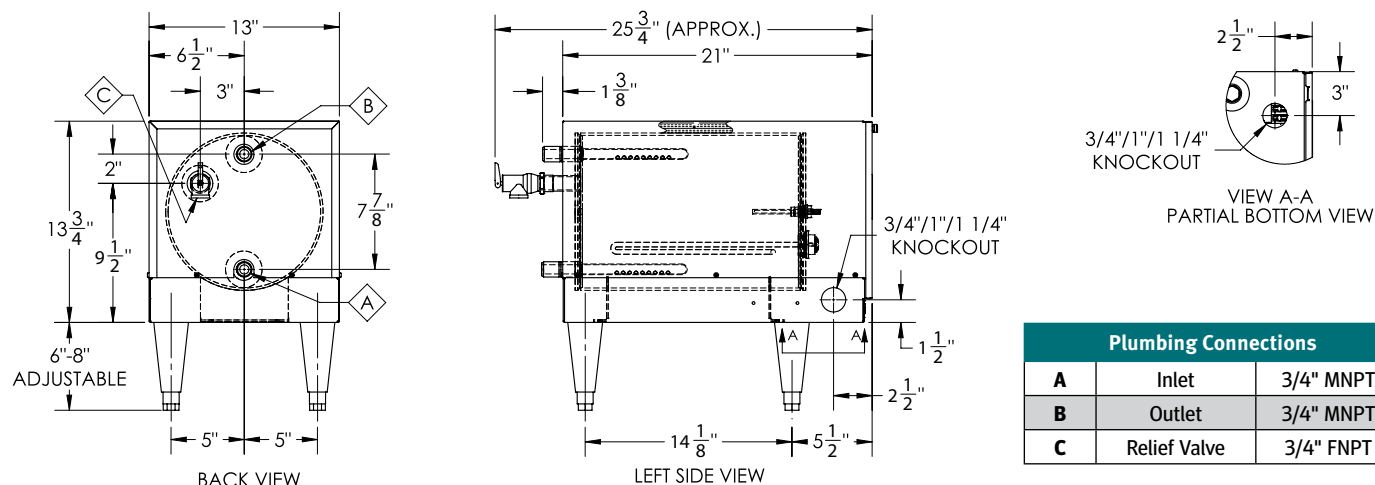
| kW<br>Rating | Recovery Rate in GPM for °F Temperature Rise Listed Below (°FΔT) |      |      |     |      |      |      |
|--------------|--|------|------|-----|------|------|------|
|              | 20°  | 40°  | 60°  | 80° | 100° | 120° | 140° |
| 1            | 0.3  | 0.2  | 0.1  | 0.1 | 0.1  | 0.1  | 0.0  |
| 1.5          | 0.5  | 0.3  | 0.2  | 0.1 | 0.1  | 0.1  | 0.1  |
| 2            | 0.7  | 0.3  | 0.2  | 0.2 | 0.1  | 0.1  | 0.1  |
| 3            | 1.0  | 0.5  | 0.3  | 0.3 | 0.2  | 0.2  | 0.1  |
| 4            | 1.4  | 0.7  | 0.5  | 0.3 | 0.3  | 0.2  | 0.2  |
| 5            | 1.7  | 0.9  | 0.6  | 0.4 | 0.3  | 0.3  | 0.2  |
| 6            | 2.0  | 1.0  | 0.7  | 0.5 | 0.4  | 0.3  | 0.3  |
| 7            | 2.4  | 1.2  | 0.8  | 0.6 | 0.5  | 0.4  | 0.3  |
| 9            | 3.1  | 1.5  | 1.0  | 0.8 | 0.6  | 0.5  | 0.4  |
| 10.5         | 3.6  | 1.8  | 1.2  | 0.9 | 0.7  | 0.6  | 0.5  |
| 12           | 4.1  | 2.0  | 1.4  | 1.0 | 0.8  | 0.7  | 0.6  |
| 13.5         | 4.6  | 2.3  | 1.5  | 1.2 | 0.9  | 0.8  | 0.7  |
| 15           | 5.1  | 2.6  | 1.7  | 1.3 | 1.0  | 0.9  | 0.7  |
| 18           | 6.1  | 3.1  | 2.0  | 1.5 | 1.2  | 1.0  | 1.9  |
| 24           | 8.2  | 4.1  | 2.7  | 2.0 | 1.6  | 1.4  | 1.2  |
| 27           | 9.2  | 4.6  | 3.1  | 2.3 | 1.8  | 1.5  | 1.3  |
| 30           | 10.2   | 5.1  | 3.4  | 2.6 | 2.0  | 1.7  | 1.5  |
| 36           | 12.3   | 6.1  | 4.1  | 3.1 | 2.5  | 2.0  | 1.8  |
| 39           | 13.3   | 6.7  | 4.4  | 3.3 | 2.7  | 2.2  | 1.9  |
| 40.5         | 13.8   | 6.9  | 4.6  | 3.5 | 2.8  | 2.3  | 2.0  |
| 45           | 15.4   | 7.7  | 5.1  | 3.8 | 3.1  | 2.6  | 2.2  |
| 54           | 18.4   | 9.2  | 6.1  | 4.6 | 3.7  | 3.1  | 2.6  |
| 58.5         | 20.0   | 10.0 | 6.7  | 5.0 | 4.0  | 3.3  | 2.9  |
| 64           | 21.8   | 10.9 | 7.3  | 5.5 | 4.4  | 3.6  | 3.1  |
| 68           | 23.2   | 11.6 | 7.7  | 5.8 | 4.6  | 3.9  | 3.3  |
| 81           | 27.6   | 13.8 | 9.2  | 6.9 | 5.5  | 4.6  | 3.9  |
| 86           | 29.3   | 14.7 | 9.8  | 7.3 | 5.9  | 4.9  | 4.2  |
| 88           | 30.0   | 15.0 | 10.0 | 7.5 | 6.0  | 5.0  | 4.3  |

All information is subject to change without notice. Consult factory for submittal drawings.

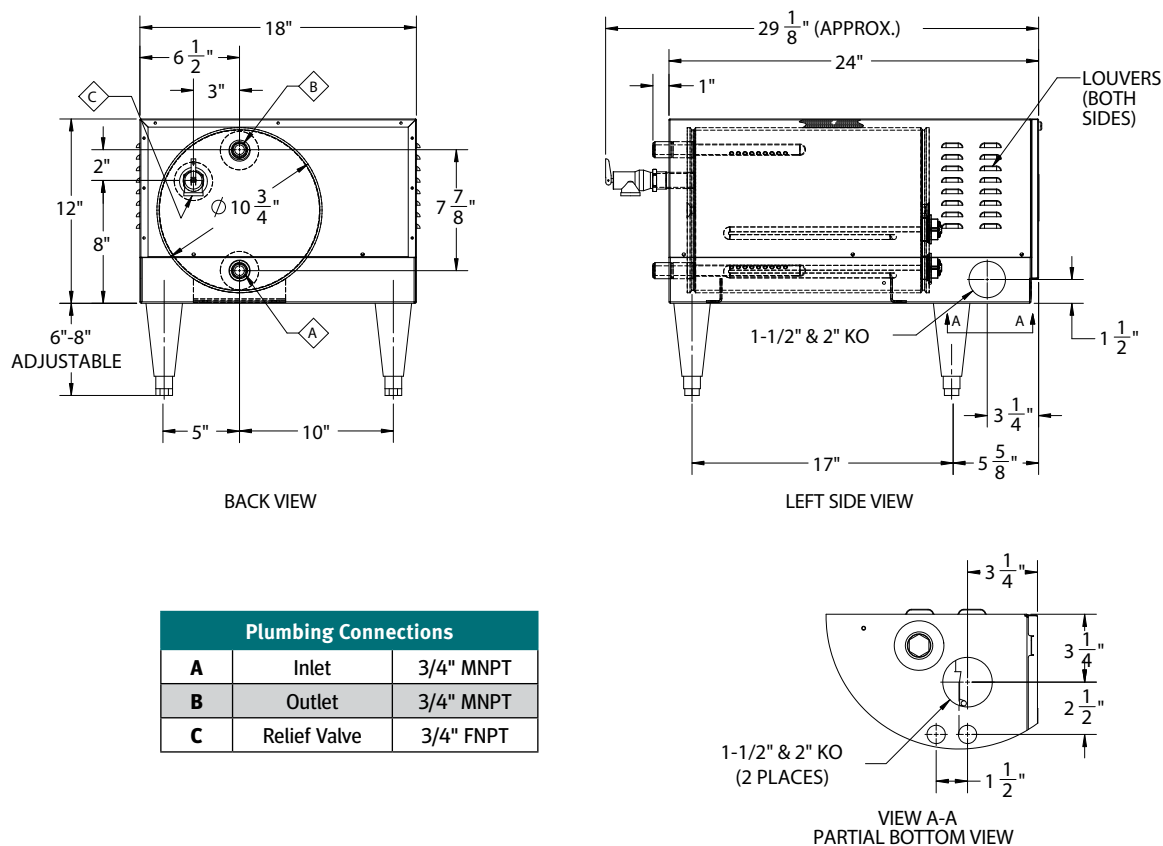


## Dimensions

**Process V6–(1 to 18 kW)** Sample dimensions are for a V612T



**Process V6–(24 to 58 kW)** Sample dimensions are for a V658T4

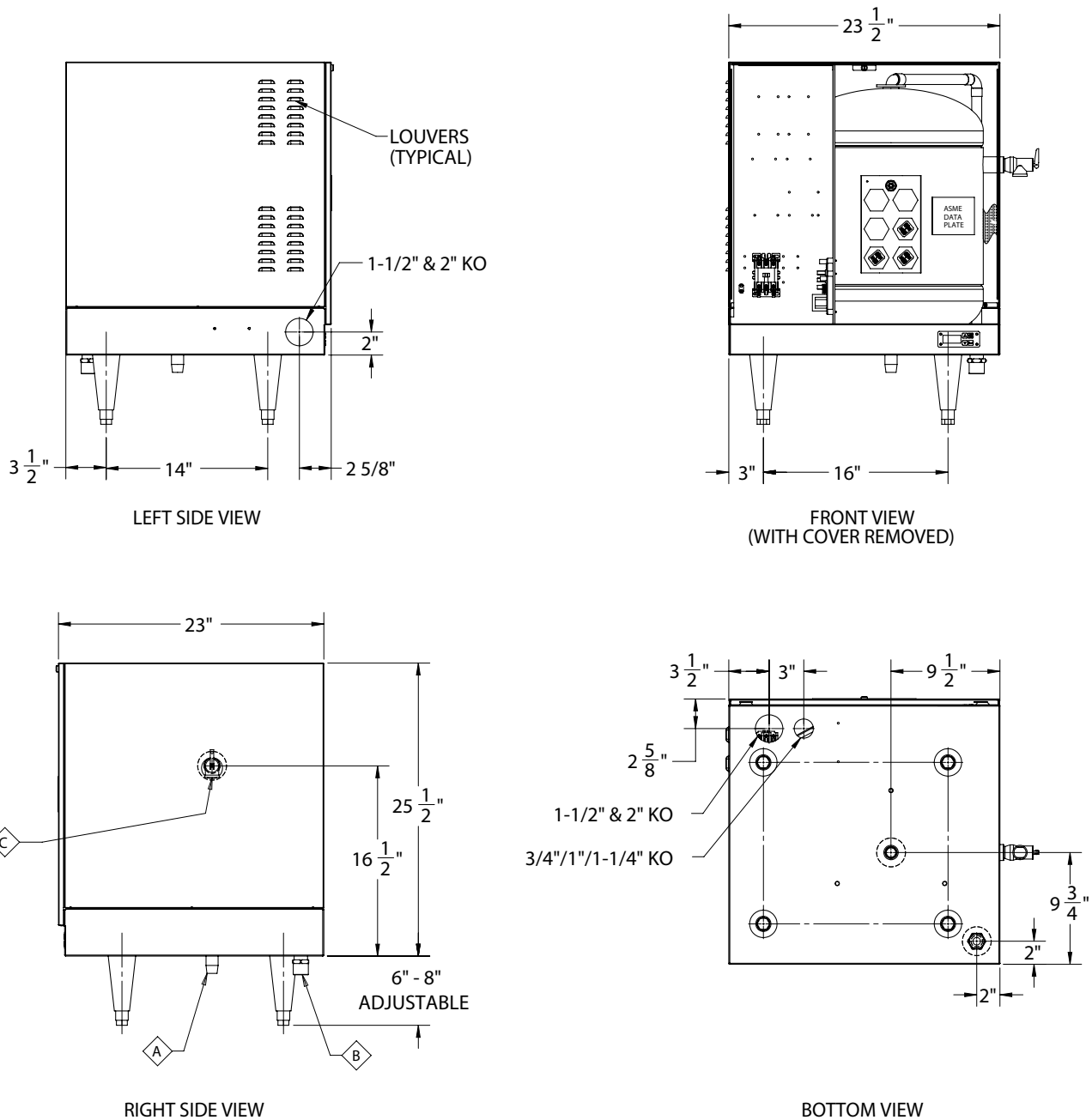


All information is subject to change without notice. Consult factory for submittal drawings.



# Dimensions

**Process V16** Sample dimensions are for a V1612R



| Plumbing Connections |              |           |
|----------------------|--------------|-----------|
| A                    | Inlet        | 3/4" MNPT |
| B                    | Outlet       | 3/4" MNPT |
| C                    | Relief Valve | 3/4" FNPT |

All information is subject to change without notice. Consult factory for submittal drawings.

## Process V Sizing Information

### Versatile and Cost reducing design

#### In a continuous flow application...

with a constant flow of water the Hubbell Process V operates similar to an instantaneous, on-demand heater with the kW sized to meet the full GPM flow rate and temperature rise of the system.

#### In an Intermittent flow application...

with an ON/OFF cyclical demand (as in wash and rinse systems) the Process V will heat to the desired GPM flow

rate and temperature while reducing your peak power load. This is achieved due to the small reserve capacity of the Hubbell Process V which continues to be heated during the cycle OFF period in order to meet the full demand during the cycle ON period. This feature results in a significant reduction in your peak power consumption rate, increased temperature accuracy, and lower installation and operating costs when compared to an instantaneous heater.

**IF** the application is a continuous demand at a constant GPM then go directly to the recovery rate chart on page 8 and choose the appropriate kW which equals the flow rate at the desired temperature rise.

**IF** the application is an intermittent on/off cyclical system, the following steps will help determine the appropriate size Process V model

### Variables to Solve For:

**Step 1:** Determine the variables listed below.

Variables

- Hot Water Flow Rate: \_\_\_\_\_ GPM
- Time hot water at above rate is required: \_\_\_\_\_ Minutes
- Time between usages: \_\_\_\_\_ Minutes
- Total Cycle Time (Add #2 and #3) \_\_\_\_\_ Minutes
- Total Gallons used per cycle (#1 x #2) \_\_\_\_\_ Gallons
- Water Temperature:  
\_\_\_\_\_ °F Incoming Cold  
\_\_\_\_\_ °F Outgoing Hot

**Step 2:** If variable #5 is between:

- 1–9 gallons then select V6 model and Y=5
- 10–35 gallons then select V16 model and Y=13
- Over 35 gallons see model D brochure for storage type or model CR brochure for large instantaneous Type DI water heaters.

**Step 3:**

$$\frac{\text{Gallons per cycle} - Y}{\text{(Variable 5)}} \times 1.15 = \text{RGPM}$$

$$\frac{\text{Time On} \times 0.80}{\text{(Variable 2)}}$$

**Step 4:**

$$(\text{RGPM} \times \text{Total Cycle Time}) - \text{Gallons Per Cycle} \geq 0$$

(Variable 4)                      (Variable 5)

If true, then go to Step 6

If false, then continue to Step 5

**Step 5:** If 0 then use the following formula:

$$\frac{\text{Gallons per cycle (Variable 5)}}{\text{Total Cycle Time (Variable 4)}} \times 1.15 = \text{RGPM}$$

**Step 6:** Take the RGPM value solved for either in Step 3 or Step 5 above and go to the recovery rating GPM chart. Choose the appropriate temperature rise column and find a GPM rating equal or greater than RGPM. Select the appropriate model for the voltage and phase available.

**Example:** A parts wash station requires 4 GPM of 160°F DI water. The entering cold water is 60°F. The rinse cycle is on for 5 minutes at full flow and then off for 10 minutes. The power available is 480-volt 3 phase.

#### Step 1

Solve for variables

1. Flow Rate: 4 GPM
2. Cycle Time On: 5 Minutes
3. Cycle Time Off: 10 Minutes
4. Total Cycle Time: 15 Minutes
5. Gallons Per Cycle: 20 Gallons
6. Cold Water: 60°F
7. Hot Water: 160°F

**Step 2:** Gallons per cycle is 20, therefore the V16 Base Model is used and variable Y=13

**Step 3:**  $20 - 13 = 7 \div (5 \times .80) = 1.75 \times 1.15 = 2.0 \text{ GPM}$

**Step 4:**  $2.0 \times 15 = 30 - 20 = 10 > 0$

**Step 5:** Not required because step 4 is true

**Step 6:** From the recovery rating selection chart go to the 100°FΔT column and select the kW that will provide at least 2.0 GPM as determined in Step 3.

In this case, select the 36 kW size and the V16 Model as determined in Step 2.

Specify Model V1636T4

**Note:** In comparison an instantaneous design would require a 58 kW heater.



## Packaged System Option

### Fully Packaged Systems

- Engineered and built to meet your exact needs
- Factory integrated system simplifies installation
- Factory selected components ensures reliable performance as a system

Contact Factory Sales Engineer to discuss your Packaged System

*Left: A 58kW 480V 3Φ packaged system with dual hot water pumps and integrated SCR heater and pump control panel. Factory wired, piped, skid mounted and tested.*

The Hubbell Process V also plays an important role in our Omni HHP Heat Pump System. For more information on the Omni HHP contact [sales@hubbellheaters.com](mailto:sales@hubbellheaters.com)

## Process V Model Number Designation

| MODEL                   | See charts on<br>pages 5 & 6 | VOLTAGE / PHASE   |   | OPTIONAL EQUIPMENT  |
|-------------------------|------------------------------|---|---|---|
|                         | kW RATING                    |   |   |   |
| <b>V6</b><br><b>V16</b> | 1-88                         | <b>A</b> = 120/1<br><b>RS</b> = 208/1<br><b>S</b> = 240/1<br><b>W</b> = 277/1<br><b>T4S</b> = 480/1 | <b>R</b> = 208/3<br><b>T</b> = 240/3<br><b>T3</b> = 380/3<br><b>T7</b> = 415/3<br><b>T5</b> = 440/3<br><b>T4</b> = 480/3<br><b>T6</b> = 600/3 | Write/type optional equipment code in the gray box below in alphabetical order. For multiple options separate codes with a dash (-) |
|                         |                              |   |   |   |

### Example: V645T4-C52

An industrial Hubbell Process V water heater with 6 gallons storage capacity, 45 kW rated at 480 volt 3 phase 60 Hz power with optional alternate high temperature set point.

## Optional Equipment

**Note:** Optional equipment must be called out in the written specifications, use the codes below.

| Controller |   | Electrical     |   |
|------------|---|----------------|---|
| <b>C35</b> | BACnet Communication Module with T1000 Digital Controller   | <b>E7</b>      | 316L Stainless Steel Heating Elements   |
| <b>C49</b> | Solid State Power Controllers for Increased Temperature Accuracy  | <b>General</b> |   |
| <b>C51</b> | Remote Control Display, Allows the Heater to be Installed in a Remote Location. The 3" X 5" NEMA 4 Display Enclosure can be Located up to 25' from the Heater | <b>G41</b>     | Adjustable Stainless Steel Legs   |
| <b>C52</b> | Alternate High Temperature Setpoint   | <b>G42</b>     | Flanged Toe Stainless Steel Legs  |
| <b>C53</b> | Low Temperature Interlock Alarm   | <b>Vessel</b>  |   |
| <b>C54</b> | Alarm Contact for Hi-Limit or Low Water Condition (Specify N.O. or N.C.)  | <b>V10</b>     | 1-1/2" Male NPT Inlet and Outlet Water Connections (V16 Only)                             |
| <b>C55</b> | Low Temp Alarm Dry Contact  | <b>V12</b>     | 1-1/4" Inlet/Outlet   |
| <b>C56</b> | High Temp Alarm Dry Contact   | <b>V40</b>     | Flanged Inlet and Outlet Connections (ANSI Class 150, Please Specify Size)                |
| <b>C58</b> | 24V Interlock Adapter   | <b>V41</b>     | Alternate Threaded Inlet/Outlet Connections Size (V16 Only)                               |
|            |   | <b>V42</b>     | Sanitary Connections (Specify Size)   |
|            |   | <b>V44</b>     | V6 Recirculation Package - Includes 1-1/4" Inlet/Outlet, BACnet Module, and SSR Controls  |
|            |   | <b>V45</b>     | V16 Recirculation Package - Includes 1-1/2" Inlet/Outlet, BACnet Module, and SSR Controls |

**Please note:** Optional equipment may impact overall dimensions and weight. Please request submittal drawing from factory.

## Available Accessories

**10-year Warranty:** 10-year non pro-rated tank warranty, specify part number "VESSEL WARRANTY"

**Slide Brackets:** Slide mount bracket for hanging installation (V6 only), specify part number "SLIDE BRACKETS"

**Protective Cover:** Water resistant rip-stop 18 oz. grey FR vinyl coated polyester scrim cover. Removable and form-fitted with Velcro fasteners and clear window showing digital display. **V6** specify part number "J6-SHROUD," **V16** specify part number "J16-SHROUD"

| Accessories Name | Part # |
|------------------|--------|
| Accessories Name | Part # |
| Accessories Name | Part # |

All information is subject to change without notice. Consult factory for submittal drawings.

H1087-G-20260128